

COLD CHISELS (Contd.)

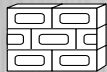
Concrete Point Chisels

These are used for breaking up concrete floors, sidewalks etc. Channels in concrete floors should be marked out with a flat chisel before using the Concrete Point Chisel for stock removal.

Cat.Nr.	Ordering Nr.	Point Size (P)		Stock Size		Overall Length (L)	
		Inch	mm	Inch	mm	Inch	mm
CRP/150-13	32650	5/32	4	1/2	13	6	150
CRP/200-13	32651	5/32	4	1/2	13	8	200
CRP/250-16	32652	7/32	5	5/8	16	10	250
u CRP/250-19	32653	1/4	6	3/4	19	10	250
u CRP/300-19	32654	1/4	6	3/4	19	12	300

u BESTSELLER

UTILITY



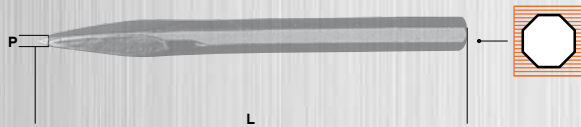
MASONRY



FORGED CONSTRUCTION



52-58 HRC



<ConcretePointChisels

Scutch Holding Chisel

These are designed for holding detachable stone dressing combs. Due to the specific nature of application these are not hardened

Cat.Nr.	Ordering Nr.	Scutch Width		Stock Size		Overall Length	
		Inch	mm	Inch	mm	Inch	mm
CHS/SCH/01	32656	1	25	5/8	16	8	200
CHS/SCH/1-1-2	32657	1.1/2	38	5/8	16	8	200

Plugging Chisel

These are designed to remove the mortar or cement between bricks for the complete removal of bricks. The cutting edge is wider than the blade to give maximum clearance and the flute allows faster clearance of debris.

Cat.Nr.	Ordering Nr.	Blade Width		Stock Size		Overall Length	
		Inch	mm	Inch	mm	Inch	mm
CHS/PLG/01	32655	1/4	6	5/8	16	10	250



<Plugging Chisel

ScutchHoldingChisel>