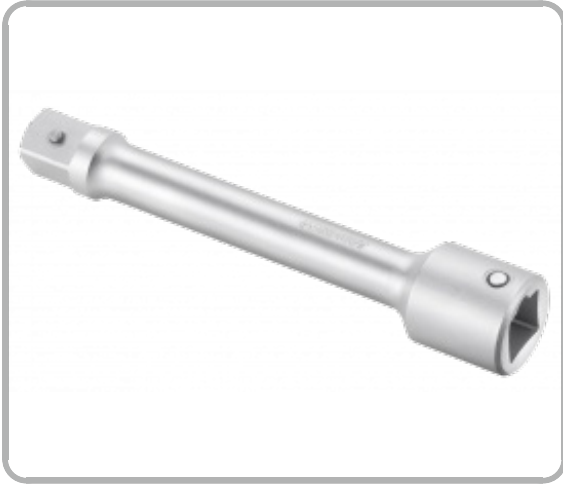


3/4" EXTENSIONS | E113823



Description

- ISO 3316 - DIN 3123 - ISO 1174-1
- Matt Chrome finish.
- Chrome vanadium steel.
- For manual use.

Information

EAN	3258951138236
d1 [mm]	35.5
d2 [mm]	25
L [mm]	400
Conditioning	1
[g]	1130

